

Name: _____

Show work needed to justify your answer.

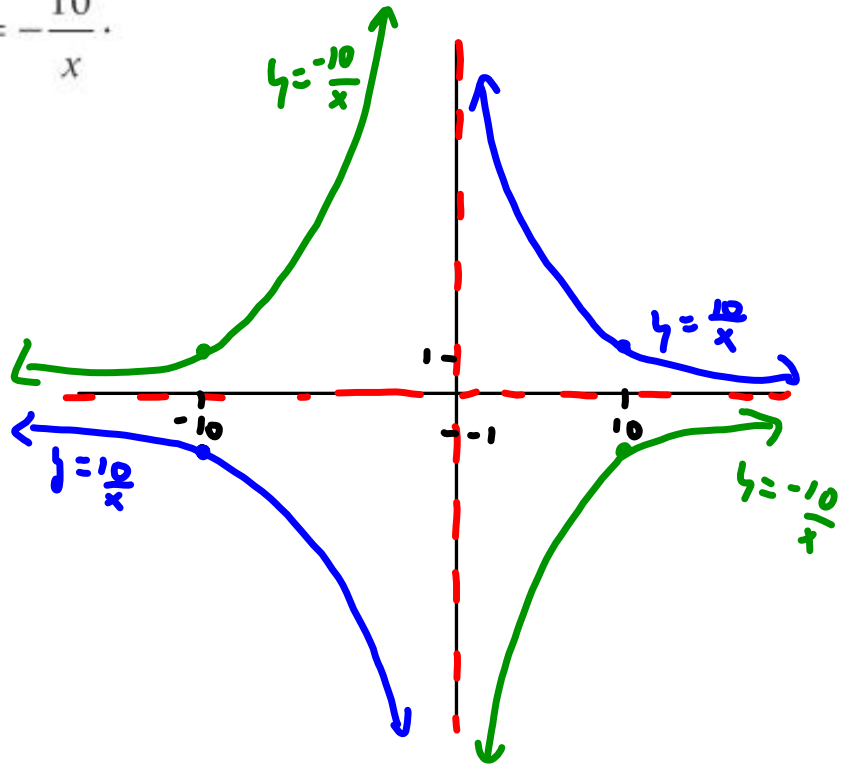
Date: _____

HW: # 14: Math IBSL - Standard 14 -The Reciprocal Function

5 points

2 On the same set of axes, sketch the graphs

of $y = \frac{10}{x}$ and $y = -\frac{10}{x}$.



4 Sketch the curve $y = \frac{5}{x}$. Write down the equations of its asymptotes, and state the domain and range.

Horiz Asymp: $y = 0$

Vert Asymp: $x = 0$

