

Name: \_\_\_\_\_

Show work needed to justify your answer.

Date: \_\_\_\_\_

HW: # 3: Math IBSL - Standard 3 - Drawing Graphs of Functions

5 points

1 Use your GDC to sketch the graphs of the following functions:

a  $f(x) = -0.01x^2 + 0.5x + 2.56$

b  $g: x \rightarrow 0.44\sqrt{3.2x - 4.1}$

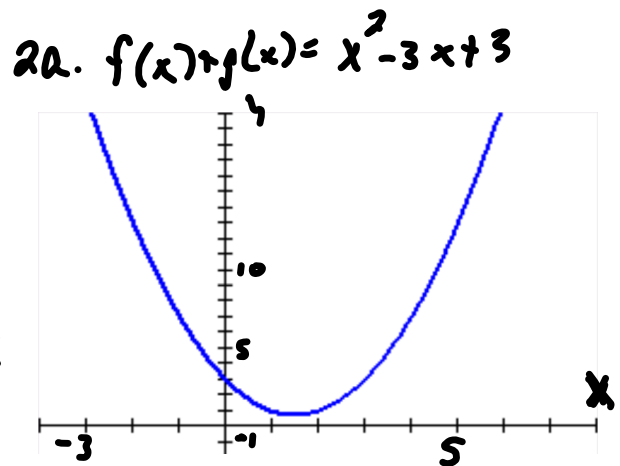
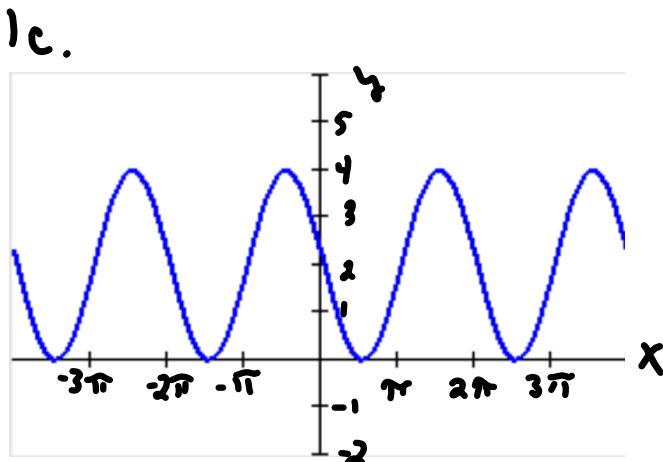
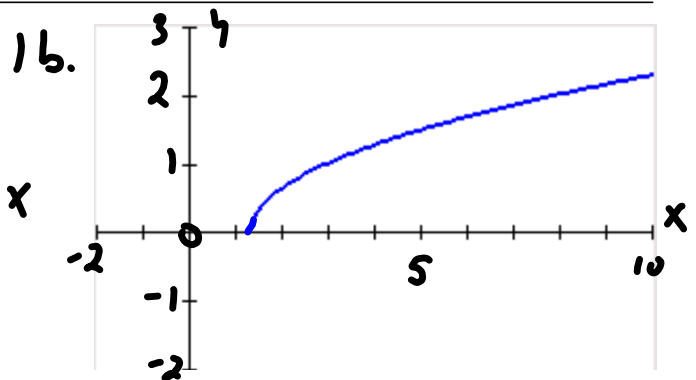
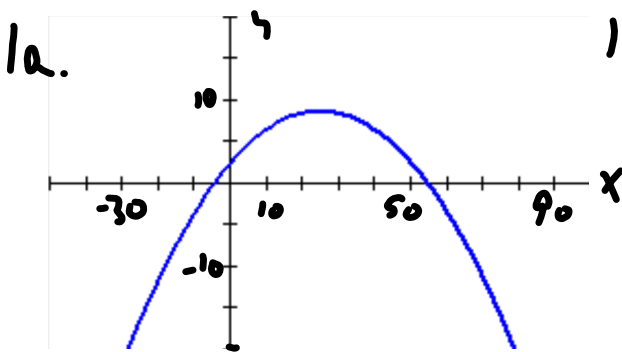
c  $y = 2\sin(x + 3) + 2$

2 Given  $f(x) = x^2 + 1$ ,  $g(x) = -3x + 2$  and  $h(x) = \sqrt{x}$ , use your GDC to sketch the graphs of the following:

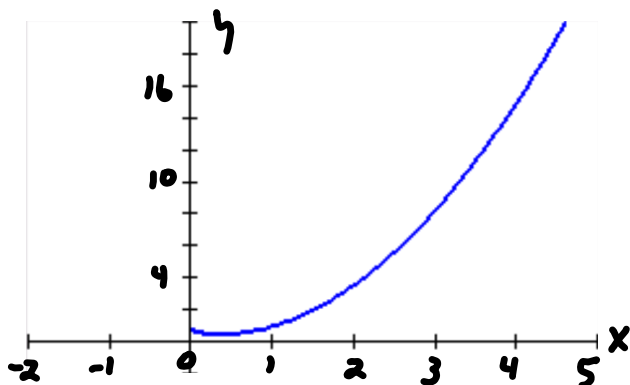
a  $f(x) + g(x)$

b  $f(x) - h(x)$

c  $f(x) \times g(x)$



2b.  $f(x) - h(x) = x^2 + 1 - \sqrt{x}$



2c.  $f(x) \cdot g(x) = (x^2 + 1)(-3x + 2)$

