

Name: _____

Show work needed to justify your answer.

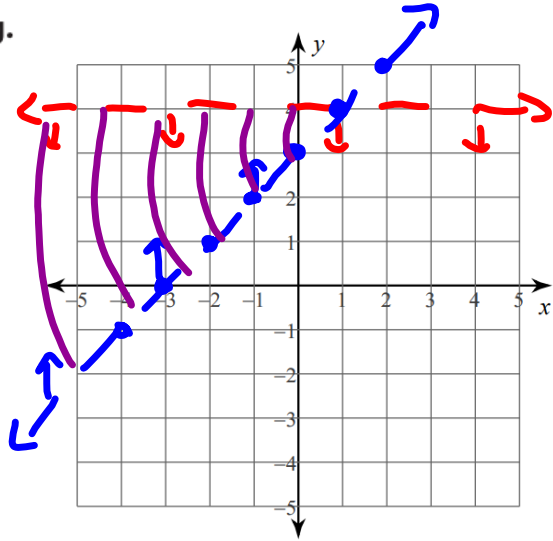
Date: _____

HW # 42: Algebra 1 - Standard 26 - Solve Systems of Inequalities by Graphing

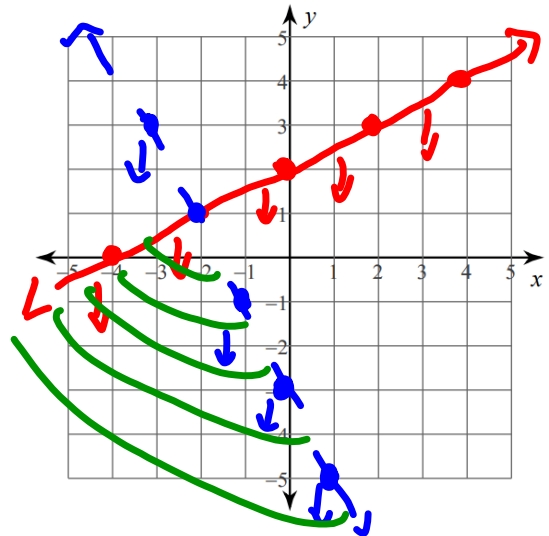
5 points

Solve each system of inequalities by graphing.

1. $y < 4$
 $y > \frac{1}{2}x + 3$



3) $y \leq \frac{1}{2}x + 2$
 $y < -2x - 3$



6) $y \geq \frac{2}{3}x + 3$
 $y > -\frac{4}{3}x - 3$

