

Name: _____

Show work needed to justify your answer.

Date: _____

HW: # 9a: Math IBSL - Standard 9 - Transformations of Functions

5 points

1 The graph of $y = f(x)$, where $-3 \leq x \leq 6$, is shown. Copy the graph of f and draw these functions on the same axes.

a $g(x) = f(-x)$

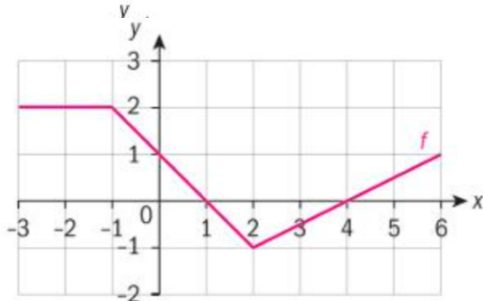
b $g(x) = -f(x)$

c $g(x) = f(2x)$

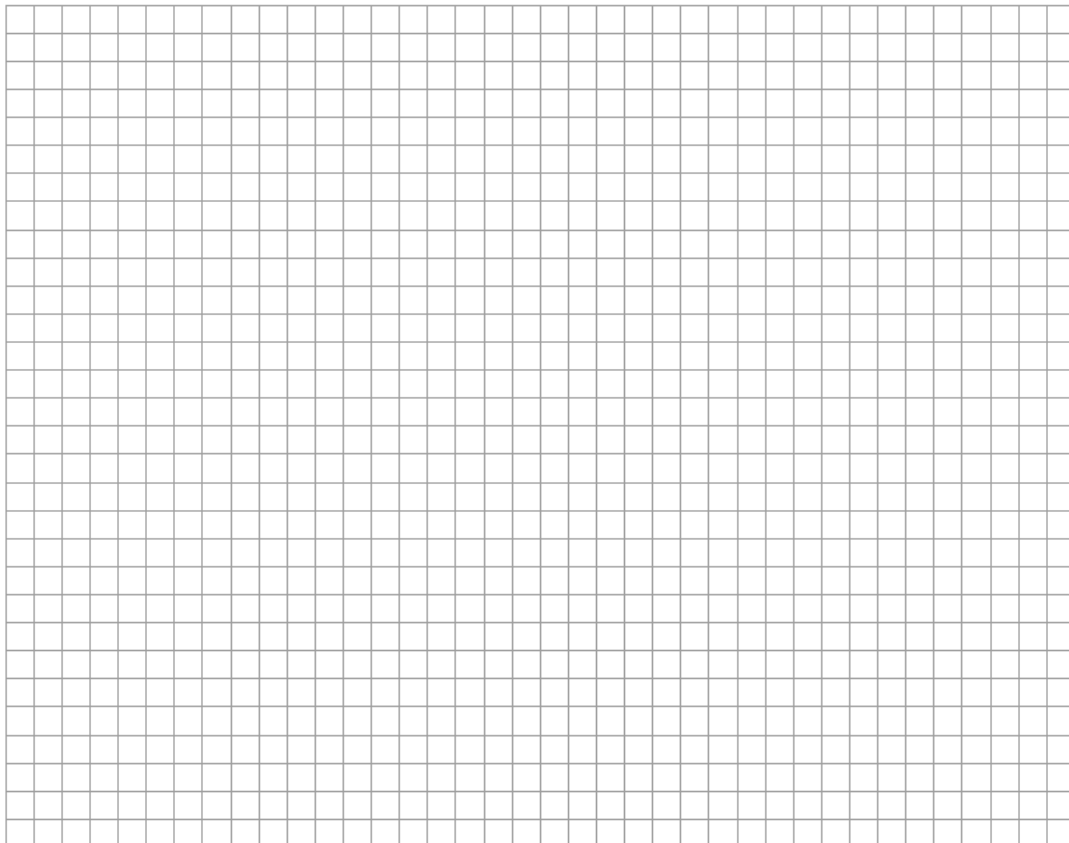
d $g(x) = 3f(x)$

e $g(x) = f(x + 6)$

f $g(x) = f(x) - 3$



*be sure to label each graph



Name: _____

Show work needed to justify your answer.

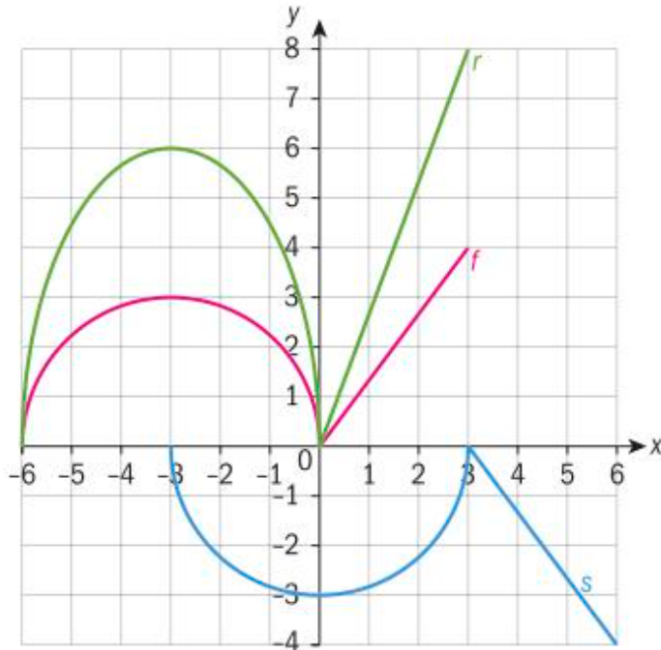
Date: _____

HW: # 9a: Math IBSL - Standard 9 - Transformations of Functions

5 points

- 2 The graphs of functions r and s are transformation of the graph of f . Find the functions r and s in terms of f .

a



b

